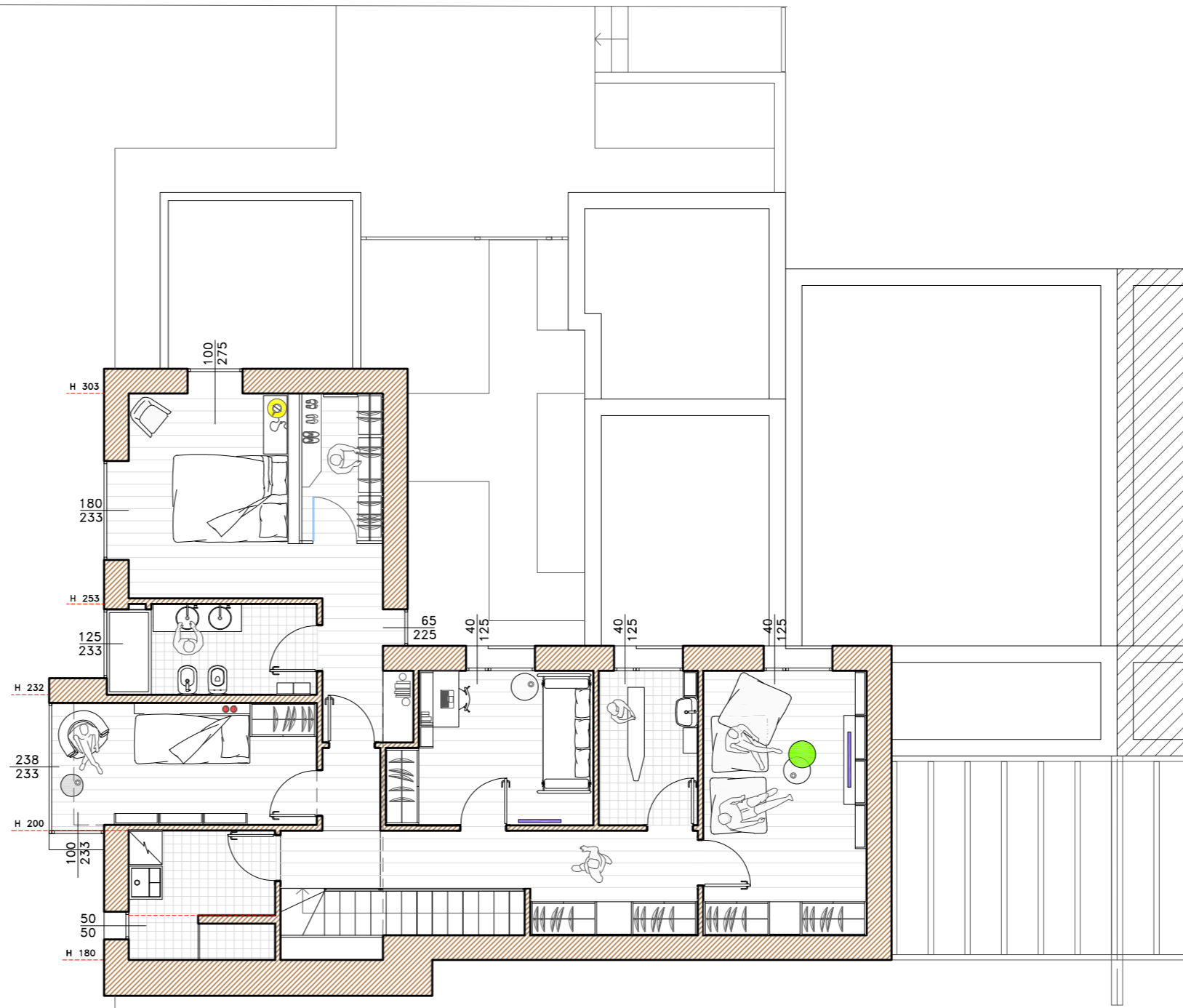
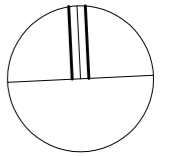
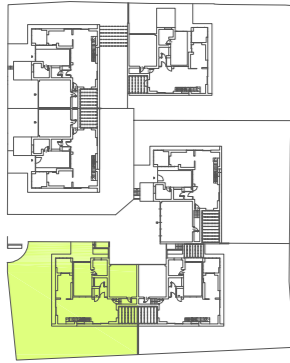


**VILLA C**  
PIANO TERRA

**SUPERFICIE COMMERCIALE:** abitazione mq. 107,70, serra mq. 11,71, pergolato mq. 15,22, giardino d'inverno mq. 35,62, giardino mq. 369,66, portico mq. 6,30, locali tecnici mq. 22,19

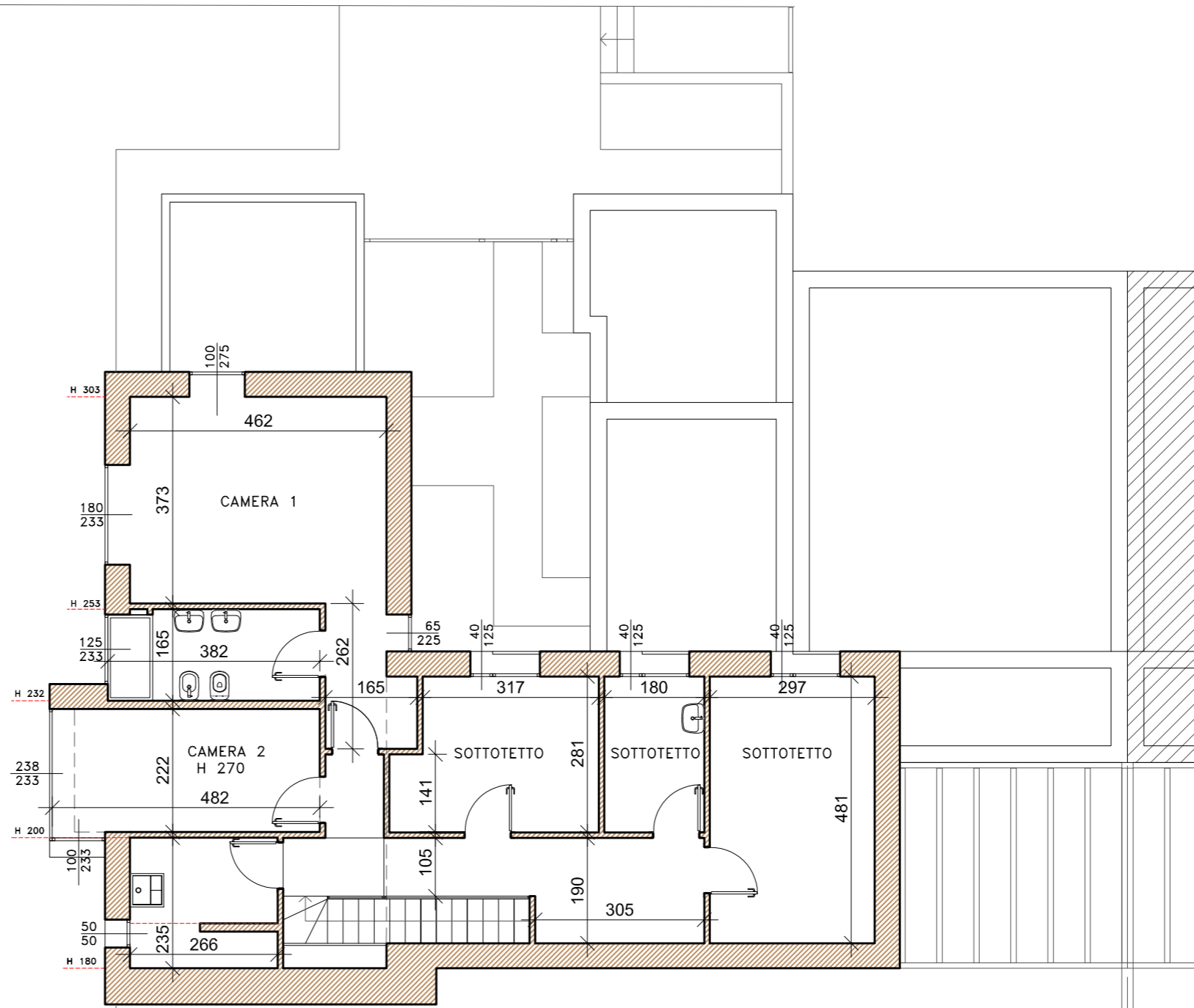
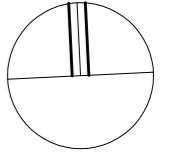
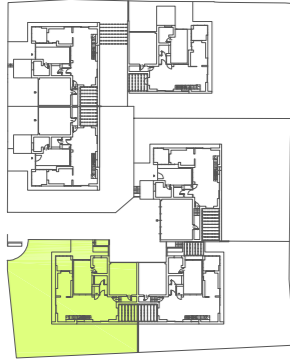




**VILLA C**  
PIANO PRIMO/SOTTOTETTO

**SUPERFICIE COMMERCIALE: abitazione mq. 57,44, sottotetto mq. 58,83**

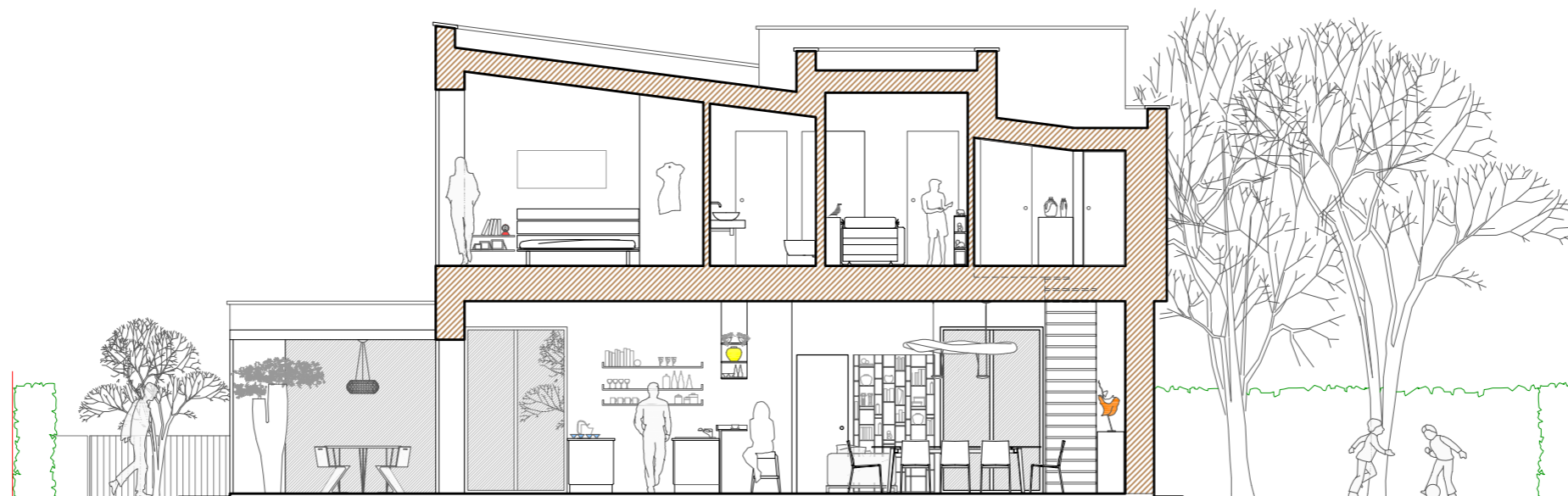




**VILLA C**  
PIANO PRIMO/SOTTOTETTO

**SUPERFICIE COMMERCIALE: abitazione mq. 57,44, sottotetto mq. 58,83**





**VILLA C**  
SEZIONE

